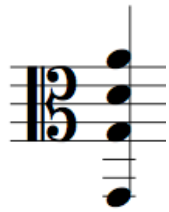


Performance Notes

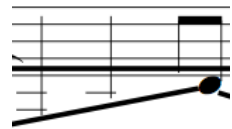
Scordatura:
Viola



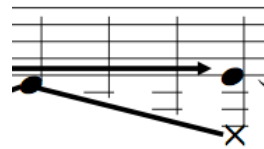
Cello



The lowest string is not played until the very end.



Gliss on lowest string while maintaining double stop with open G



Gliss past discernible pitch on lowest string

*udu-udu

Play with very little bow pressure. All motion comes from the shoulder, the wrist and elbow locked. See Radulescu String Quartet #5 for reference.

ASP

Alto Sul Ponticello

AST

Alto Sul Tasto

ord

Normal bow position on strings, in reference to AST/ASP *only*.

slow QT vib



A slow, wide vibrato, approx. a quartertone above and below notated pitch



A faster quartertone vibrato

non vib

No vibrato whatsoever

vib ord

Vibrato as normal



Quartertone sharp



Quartertone flat



Scratch tone



Increase bow pressure



Decrease bow pressure



Envelope of bow pressure



Left hand pizz



Snap pizz



Highest note possible with no discernible pitch



The shape of the glissed object is more important than the exact pitch notated. All glissandi start **immediately** on the notated pitch. All glissandi should be played without vibrato and in one bow unless:



Change bow direction for each pitch in the tuplet



Harmonic gliss



Alternate left hand finger pressure to vacillate between pitch and harmonic



Maintain a tremolo with the open string while the upper note glisses

Although the piece has time signatures, they are to aid in alignment of the players and should not be taken to indicate any metric stress.

